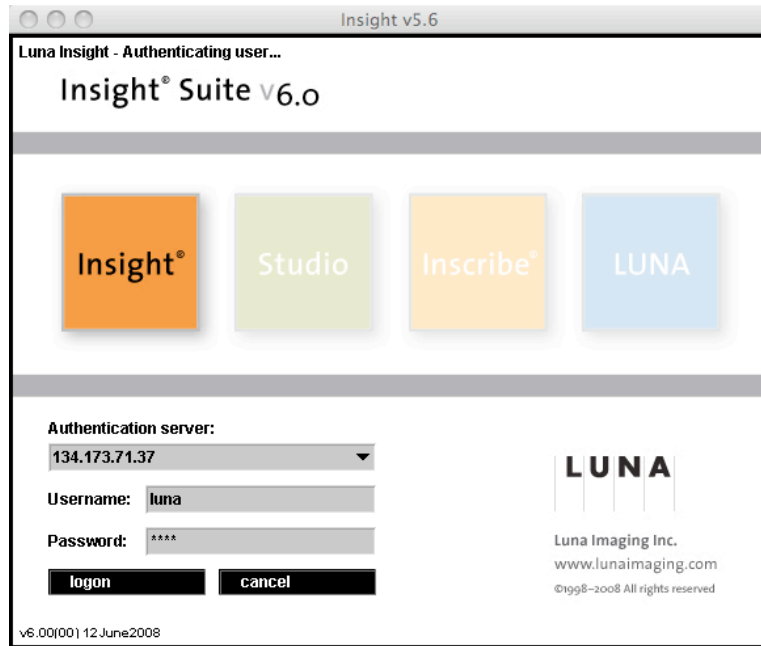
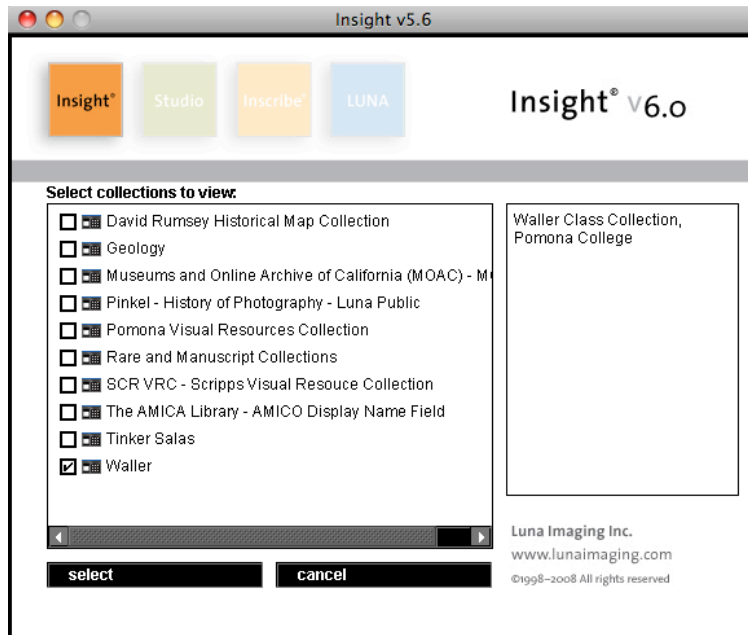


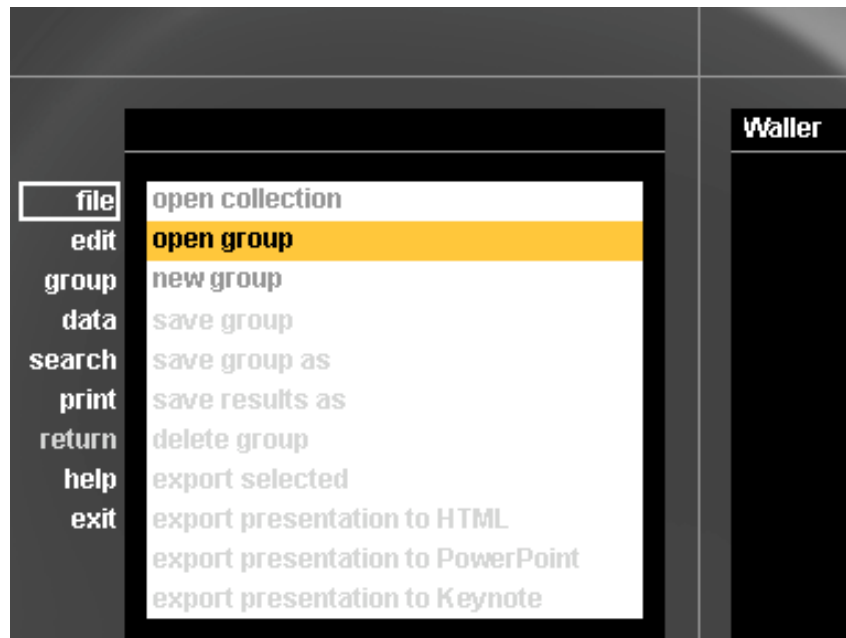
How to open a group an image group using the LUNA Insight Java client.



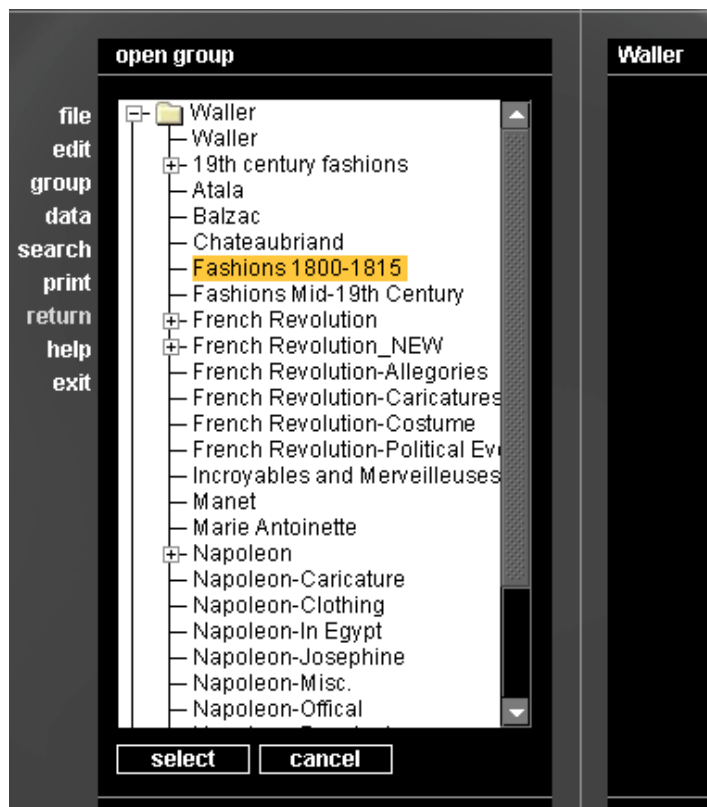
1) Start the Insight client. Public login is (luna/luna)



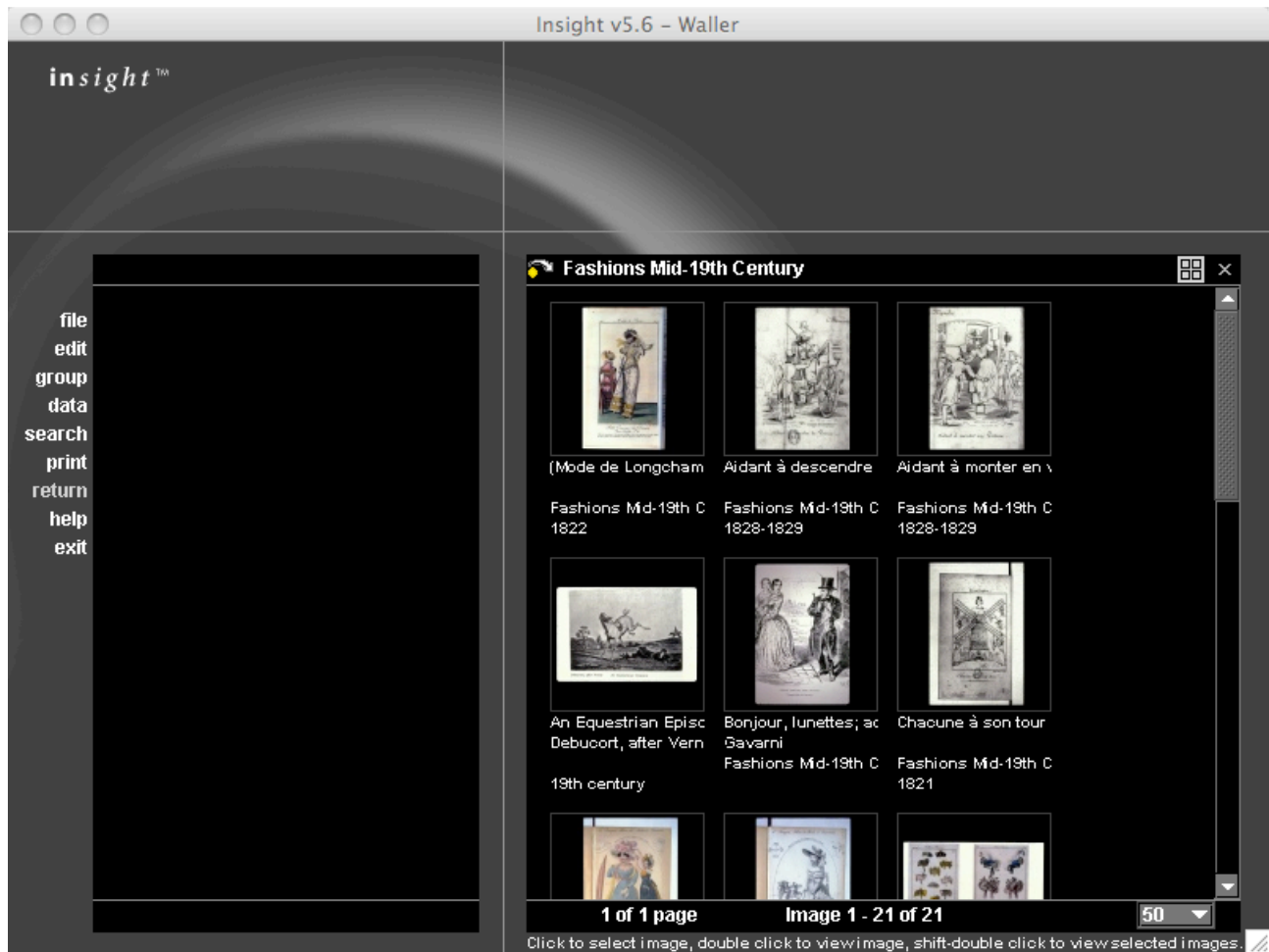
2) Upon authentication you will get a list of collections. Select "Waller" if you would like to view the "Waller" collection.



3) Use the menu on the left, choose file --> open group.



4) There will be a list of group folders, click on the appropriate one to expand and you can see its contents. Highlight what you would like to view and click the select button.



- 5) Upon clicking the select button the group will appear in the right hand side window. You may only have two group windows open at any one time.

Further Assistance and Resources:

- ★ You may download the LUNA Insight client at: <http://sax.pomona.edu/luna>
- ★ The complete software manual for the Insight client can be found at: http://www.lunaimaging.com/support/5_6/insight/en/
- ★ For further assistance with LUNA please email: itg@pomona.edu

This document was last updated on Wednesday, February 4, 2009.